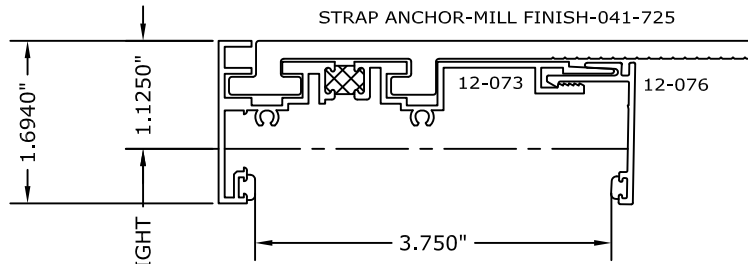
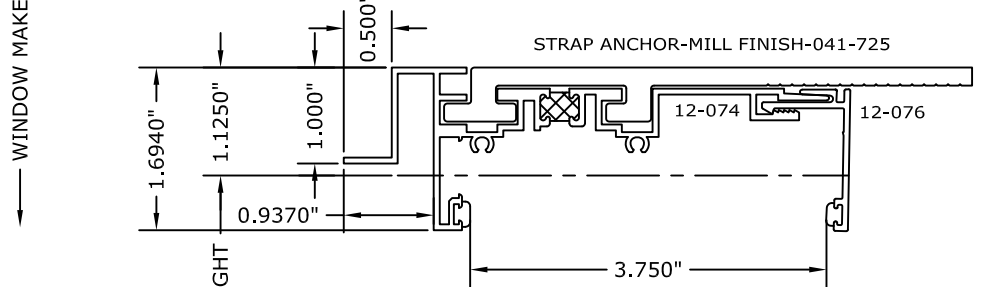


(2733) 3 3/4" THREE PIECE RECEPTOR SYSTEM

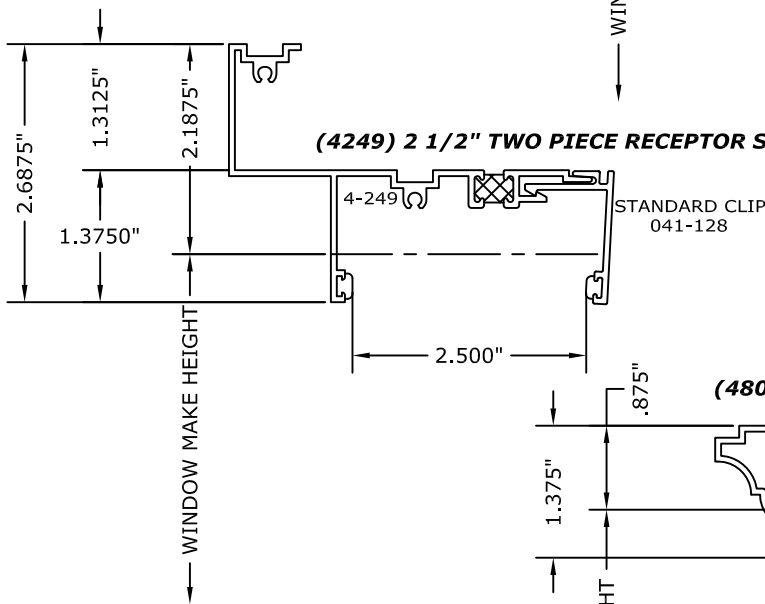


(2734) 3 3/4" THREE PIECE RECEPTOR SYSTEM

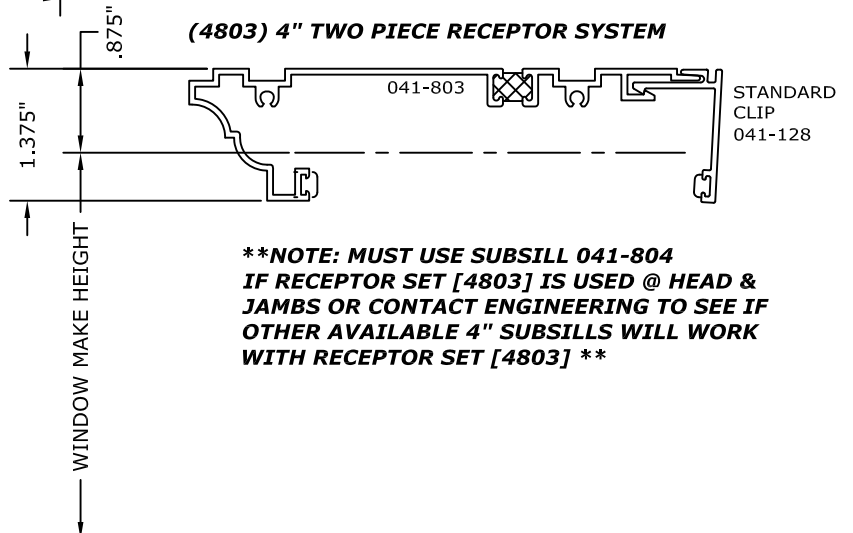


****NOTE: DIE 12-074 TO BE USED @ HEAD ONLY & DIE 12-073 @ JAMBS ****

(4249) 2 1/2" TWO PIECE RECEPTOR SYSTEM



(4803) 4" TWO PIECE RECEPTOR SYSTEM



****NOTE: MUST USE SUBSILL 041-804 IF RECEPTOR SET [4803] IS USED @ HEAD & JAMBS OR CONTACT ENGINEERING TO SEE IF OTHER AVAILABLE 4" SUBSILLS WILL WORK WITH RECEPTOR SET [4803] ****