



Architectural Windows & Doors

08 51 00/PEE
BuyLine 3208

High Performance Aluminum Window Systems

- EnerGsave
 - Single Hung
 - Double Hung
 - Horizontal Slider
 - Commercial Fixed
 - Projected In & Out
 - Casement
 - Tilt & Turn
 - Projected Fixed
 - Sliding Glass Door
 - Terrace Door
 - Window Wall
-
- Architectural
 - Acoustical
 - Blast / ATFP
 - Hurricane / Impact / Coastal
 - Historical
-
- Military
 - Government / Municipal
 - Schools
 - Commercial
 - Universities / Dormitories
 - Hospitals
 - High-Rise Complexes
 - Condominiums / Apartments
 - Hotels / Motels / Casinos
 - Airports / Sound Abatement

EnerGsave Products

Peerless is proud to offer the most innovative window product in the industry today.

AAMA Performances

Configuration	Rating	Water
Fixed @ 60" x 99"	AW-70	15psf
Fixed/Fixed @ 60" x 99"	AW-80	15psf
Casement @ 36" x 60"	AW-100	15psf
Casement @ 48" x 71"	AW-65	15psf
Twin Case @ 72" x 60"	AW-100	15psf
Projected @ 60" x 36"	AW-100	15psf
Fixed/Projected @ 60" x 99"	AW-80	15psf
Dual Action @ 60" x 99"	AW-60	15psf

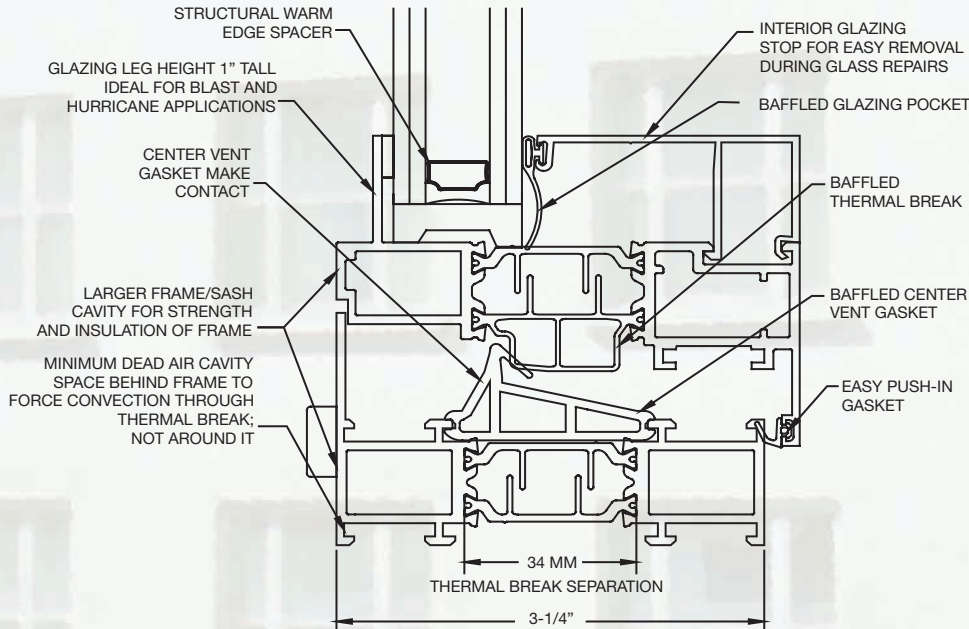
EnerGsave products currently consist of five projected series. The G series all utilize the same or similar extrusion profiles, however, each has its own thermal strip/gasket design that can be sized to your project's thermal needs.

Series	Frame Depth	Fixed	Operable	Fixed/Operable
G-000	2"	U=.26-.31	U=.28-.34	U=.28-.35
G-100	2-1/2"	U=.28-.34	U=.31-.38	U=.31-.39
G-200	3-1/4"	U=.27-.33	U=.29-.36	U=.30-.38
G-300	3-1/4"	U=.26-.32	U=.27-.33	U=.29-.35
G-400	3-1/4"	U=.20-.25	U=.21-.27	U=.22-.29

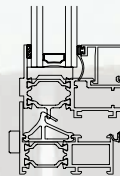
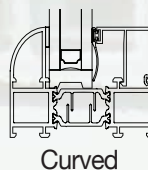
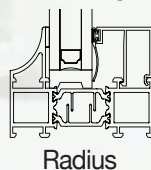
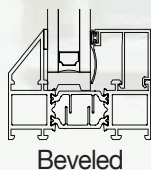
- ❖ Energy models are all created by third party agency utilizing NFRC recognized software. Performance ranges above vary upon window size and glazing used. Low U-value ranges use 1" IGU with dual low-e with argon. High U-value range uses 1" IGU with single low-e with argon. G-400 values include a 1/4" clear interior panel utilized for sound control with STC values in the high 40's.
- ❖ Both in-swing and out-swing configurations available. Windows can accommodate your blast, hurricane, and acoustical needs.
- ❖ Complete Euro-groove hardware line available with color match options, concealed 4-bar hinges, 90 degree concealed hinges, and optional white bronze hardware.

The Most Advanced Window Available!

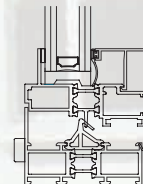
Peerless EnerGsave G-300 Series (3-1/4")



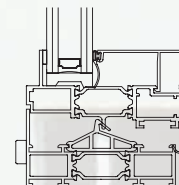
Historic Framing Profiles



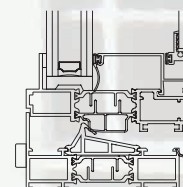
Peerless
EnerGsave
G-000 Series
(2")
24 MM-Thermal
Break Separation



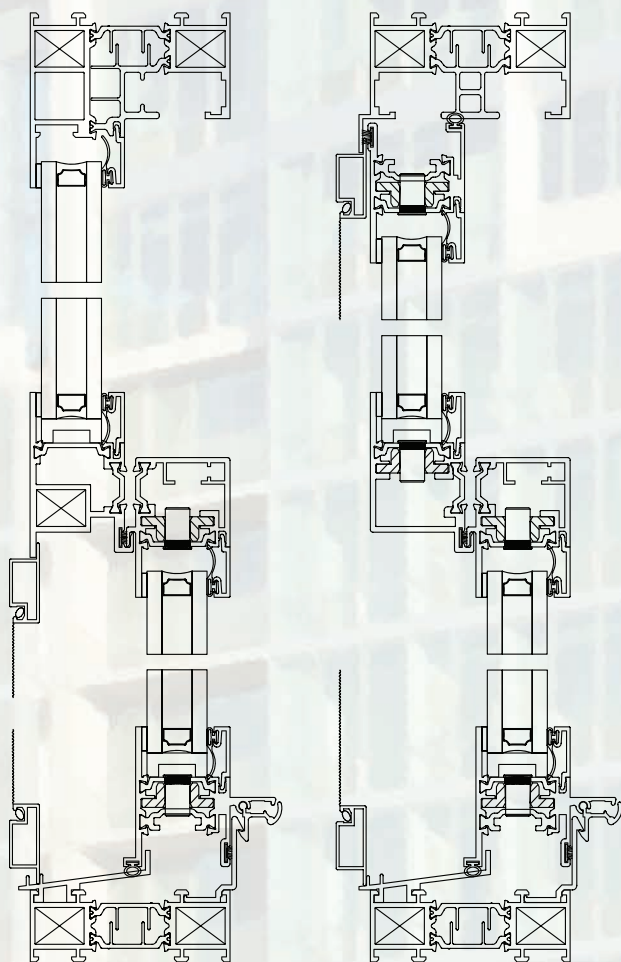
Peerless
EnerGsave
G-100 Series
(2-1/2")
14.6 MM-Thermal
Break Separation



Peerless
EnerGsave
G-200 Series
(3-1/4")
32 MM-Thermal
Break Separation



Peerless
EnerGsave
G-400 Series
(3-1/4")
34 MM-Thermal
Break Separation
Blind Capabilities

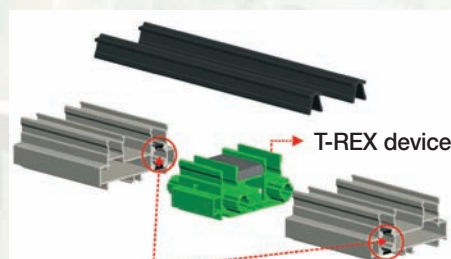


Model GSH3

Model GDH3

Model #	Operation	Depth	Test Size	Water	U-Value
GSH3	Single Hung	3-1/4"	60" x 99"	8-12psf	.30-.39
GDH3	Double Hung	3-1/4"	60" x 99"	8-12psf	.30-.40
G2SL-TREX	Horz. Slider	4"	99" x 79"	12-15psf	.30-.42

The wood grain films available for the interior of EnerGsave products are shown below.

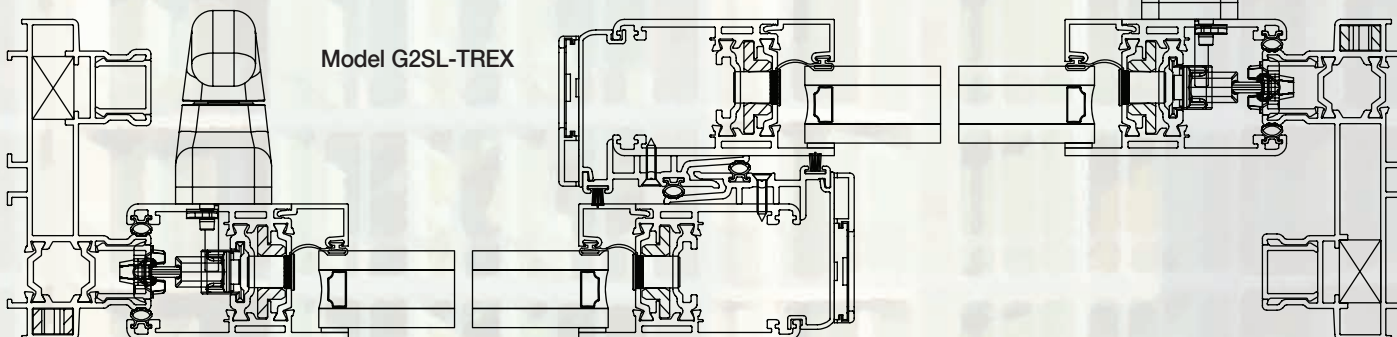


The frame has a thermal barrier in line with that of the sashes themselves.



The "Z"-shaped thermal barrier of a GOS-S frame with the T-REX system

**A sliding window can become a door
by simply changing operating hardware!**

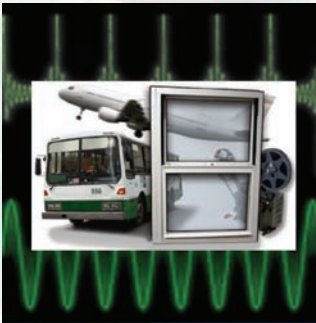


Model G2SL-TREX



INDUSTRY LEADER IN BLAST PROTECTION

Work with an industry leader in blast protection and choose from over 90 models that meet military UFC4-010-1 specifications.



ACOUSTICAL

Due to sound abatement window products commonly required in buildings around airports, train railways and high traffic areas Peerless offers both residential and commercial products.



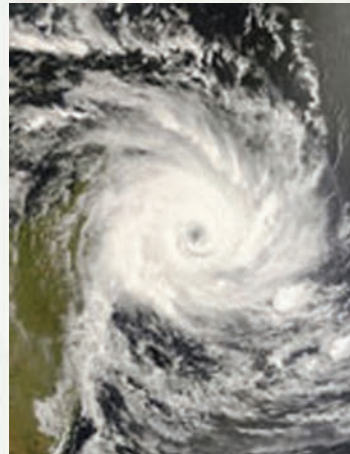
HISTORICAL

Specify window units that are tailored to meet specific sight lines matching both wood and steel replacement applications. Take advantage of Peerless' engineered features and installation accessories that compliment your window and create a historic look.



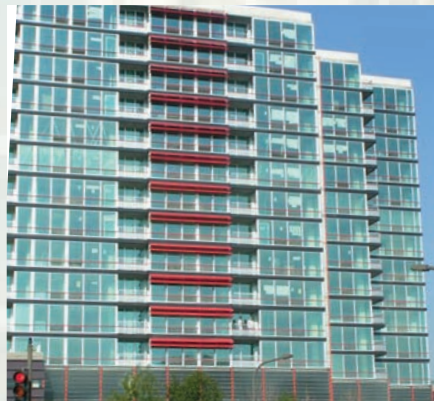
HOTEL/MOTEL NAILFIN

For time-saving solutions for your hotel/motel project, specify integral nail fins for fixed, hung, sliding and projected windows.



INDUSTRY LEADER IN HURRICANE/IMPACT

Utilize any of the 40+ cutting edge hurricane/impact products from Peerless that meet AAMA 506 specifications. For your convenience Peerless is also Florida Building Commission approved.



WINDOW WALL

At Peerless you will find the engineered window solution your large-opening projects require (including slab-to-slab construction commonly found in condominiums and high/low rise apartments).