



**High Performance
Aluminum Window
Systems**

Single Hung

Double Hung

Horizontal Slider

Commercial Fixed

Projected In & Out

Casement

Projected Fixed

Architectural

Acoustical

Blast / ATRP

Hurricane / Impact / Coastal

Historical

Airports / Sound Abatement

Military

Government / Municipal

Commercial

Universities / Dormitories

Schools

Hospitals

High-Rise Complexes

Condominiums / Apartments

Hotels / Motels / Casinos

Window Wall

Specify the Windows that Reflect Quality.

For over 50 years Peerless Products, Inc. has manufactured custom architectural and commercial windows and doors. Visit our website for complete product lines and details.

High Performance Architectural Window Solutions

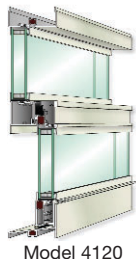
Single Hung



909 Walnut - Kansas City, MO



Model	Frame Depth
9150	4
4150	4
4140	4
9130	3-1/4
4130	3-1/4
4120	3-1/4



Model 4120

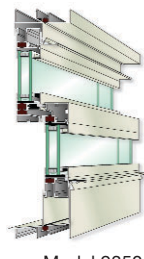
Double Hung



VA Hospital - Tucson, AZ



Model	Frame Depth
9350	4
4340	4
4360	3-1/4
4320	3-1/4
6000	4-1/2
6000-6	6
3000	2

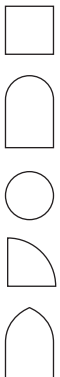


Model 9350

Commercial Fixed



University of North Carolina at Wilmington
Wilmington, NC



Model	Frame Depth
9170	4
4170	4
9160	3-1/4
4160	3-1/4
3002	2
6002-6	6
6002	4-1/2

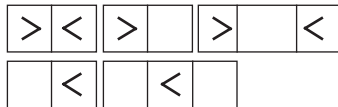


Model 6002

Horizontal Slider



Holiday Inn - Tallahassee, FL



Model	Frame Depth
9530	3-1/4
9540	4
6001	4-1/2
6001-6	6
3001	2



Model 9540

Finishes and Color Chart



Peerless Products has 24 standard paint colors in 30% Kynar to meet AAMA 2603 requirements, 50% Kynar 2604, 70% Kynar 2605. We also can match custom colors and have broad acrodize paint selections.

Peerless also offers both Class 1 and Class 2 anodize finishes in clear, light, medium, dark bronze, black, champagne, and copper. Class 1 anodize has a mil thickness of 0.7 or greater. Class 2 has a minimum thickness of 0.4.

Project Out



Platinum Condominium - Chicago, IL

Model	Frame Depth
1905	4-1/2
1901	4-1/2
1805	2
1801	2
1205	3-3/4
Series	Design
1800	Overlap
1900	Overlap
1200	Flush



Model 1801

Project In



Church Street Plaza - Evanston, IL

Model	Frame Depth
1921	4-1/2
1911	4-1/2
1821	2
1811	2
1221	3-3/4
1211	3-3/4
Series	Design
1800	Overlap
1900	Overlap
1200	Flush



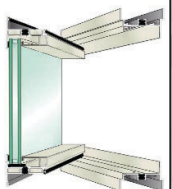
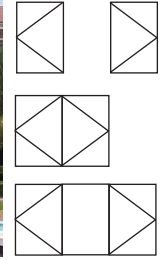
Model 1911

Casement



Florida State University
Tallahassee, FL

Model	Frame Depth
1961	4-1/2
1951	4-1/2
1861	2
1851	2
1261	3-3/4
1251	3-3/4
Series	Design
1800	Overlap
1900	Overlap
1200	Flush



Model 1951

Projected Fixed



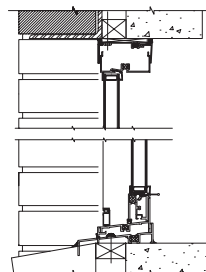
Optima Horizons Condominiums
Evanston, IL

Model	Frame Depth
1941	4-1/2
1241	3-3/4
1841	2

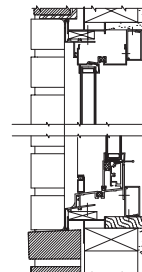


Model 1841

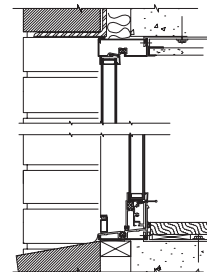
Installation Features and Options



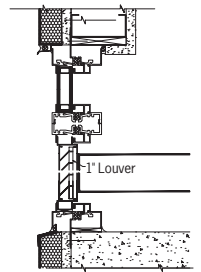
Model 4120 w/Receptor & Subsill



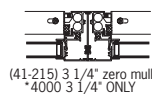
Model 4120 w/Panning & Trim



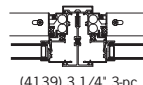
Model 4120 w/Strap
Anchors & Caulk Stop



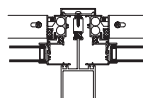
Model 4165
w/Integral Nail Fin



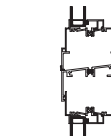
(41-215) 3 1/4" zero mull
*4000 3 1/4" ONLY



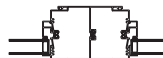
(4139) 3 1/4" 3-pc



(4575) 3 1/4" Tube Mull



(41-323) 3 1/4" stack mull



(41-130) 3 1/4" H - mull



3 1/4" Sill/Head Fixed Self Stack

Applied at Exterior
& Interior Only.
Used with Certain
Models Only

Triple Grid; Exterior Applied,
Between Glass Grids, &
Interior Tape Applied.
Configuration Depends on
Gut Capacity when Used on
Hung Products

Exterior Applied
& Interior Tape
Applied Only.

Between Glass
Grids Only



Peerless Full Featured
Windows with Dual
and Triple Glazing:
1200 Series
Windows Only

Acoustical Abatement



Air Space

Split Pane Glazing

Peerless Products is a leader in acoustic glazing systems. We have successfully tested the following products to ASTM E90"

Commercial Fixed - STC Range = 6000 Series 39-49, 9000 Series 31-37, 4000 Series 27-38

Double Hung - STC Range = 6000 Series 34-46, 9000 Series 33-34, 4000 Series 27-35

Horizontal Slider - STC Range = 6000 Series 39-46, 9000 Series 31-38

Single Hung - STC Range = 9000 Series 31-40, 4000 Series 27-35

Projected Fixed - STC Range = 1200 Series 35-48, 1900 Series 35-38, 1800 Series 35-42

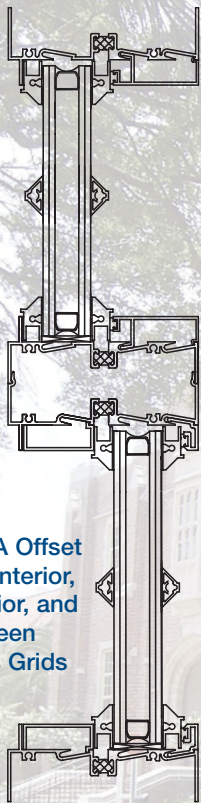
Project Out - STC Range = 1200 Series 35-47, 1900 Series 35-38, 1800 Series 35-38

Project In - STC Range = 1200 Series 35-47, 1900 Series 35-38, 1800 Series 35-38

Casement - STC Range = 1200 Series 35-47, 1900 Series 35-41, 1800 Series 35-38

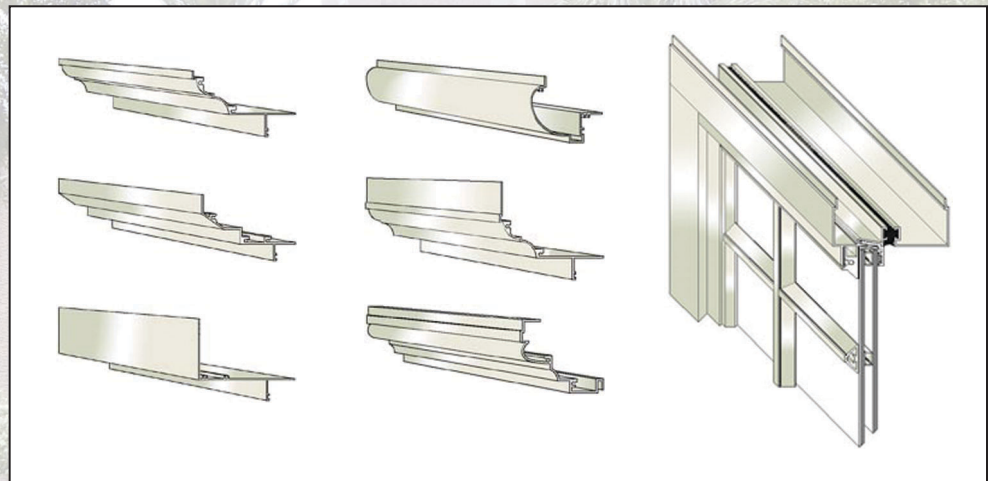
Sound Transmission Class (STC) is a rating system that helps predict how quiet an interior space will be. Peerless has successfully supplied sound reduction solutions to both residential and commercial applications around airports, train railways and high traffic areas. Common commercial uses are hotels, downtown condominiums, hospitals and office buildings.

Historical Retrofit



4170A Offset
with Interior,
Exterior, and
Between
Glass Grids

Peerless Products Models - 4120H, 4130H, 413T, 432H, 4160 Offset, and 1800 Series Products have been successfully installed in historical buildings across the world. These products tailor sightlines that match both wood and steel replacement applications. We offer a full line of scrolled panning and trims to closely match exterior profiles along with a diverse selection of exterior, between the glass, and interior applied grids. We also offer a diverse selection of sightline adapters, mull covers and sash lug options. We have our own extrusion press and can easily match new profiles to meet your project needs.



Hurricane / Impact Products



Peerless Products has successfully tested the following products to AAMA 506-2000 Large Missile Impact requirements:

- 1841 - 2" Frame, Stand alone projected fixed, test size 48" x 72", Specimen Hurricane Design = +73psf / -73psf.
- 1241- 3-3/4" Frame, Stand alone projected fixed, test size 60" X 60", Specimen Hurricane Design = +73psf/ -73psf.
- 1842 - 2" Frame, 2 lite fixed, test size 48" x 72", Specimen Hurricane Design = +73psf / -90psf.
- 1805 - 2" Frame, 2 lite fixed/project out, test size 48" x 72", Specimen Hurricane Design = +90 / -90psf.
- 1851 - 2" Frame, Casement, test size 42" x 66", Specimen Hurricane Design = +73psf / -73psf.
- 9530 - 3-1/4" Frame, XO Slider, Test size 72" x 72", Specimen Hurricane Design = +60psf/ -60psf.
- 9130 - 3-1/4" Frame, Single Hung, Test size 48" x 72", Specimen Hurricane Design = +90psf / -90psf.
- 4130 - 3-1/4" Frame, Single Hung, Test size 48" x 72", Specimen Hurricane Design = +73psf / -73psf.
- 4160 - 3-1/4" Frame, Fixed, Test size 48" x 72", Specimen Hurricane Design = +50psf / -50psf.
- 4160H1 - 3-1/4" Frame, Fixed/Fixed, Test size 48" x 72", Specimen Hurricane Design = +73psf / -70psf.
- 4165 - 3-1/4" Frame, Fixed W/Integral Nail Fin, test size 66" X 84", Specimen Hurricane Design = +50psf/ -50psf.
- 9160 - 3-1/4" Frame, Fixed, Test size 48" x 72", Specimen Hurricane Design = +50psf / -50psf.
- 6001 - 4-1/2" Frame, Horizontal Slider, Test size 72" x 48", Specimen Hurricane Design = +60psf / -60psf.
- 4500- 4- 1/2" Frame, Door, test size 96" X 108", Specimen Hurricane Design = +100psf/-100psf.

Missile Level	Missile	Impact Speed
A	Ten 2-gram Steel balls	130ft/s
B	2.0 lb 2x4 Missile	50 ft/s
C	4.5 lb 2x4 Missile	40 ft/s
D	9.0 lb 2x4 Missile	50 ft/s

Tests were performed in accordance with ASTM E 1996-99 with a Type C missile and ASTM E 1996-03 with a Type D missile. "Standard Specification for performance of windows impacted by windborne debris in hurricanes." They were cycled at design pressures both positive and negative in accordance with ASTM E 2886-97 "Standard test method of exterior windows exposed to cyclic pressure differentials." Peerless State Wide Approval for Florida can be viewed at www.floridabuilding.org.

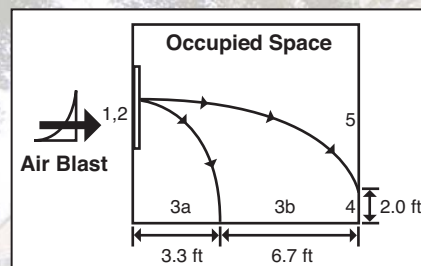
2670.2 - 1841	2670.6 - 4160	2717.4 - 9130
2670.3 - 1842	2717.2 - 4130	2722.2 - 1851
2725.2 - 1805	5874.2 - 9530	

Blast Mitigation



Peerless Products has successfully tested and have had window analysis performed on the following models in accordance with 2003 UFC4-010-01 requirements.

- Fixed = Level 2 No Hazard - 1841, 1842, 1241, 1242, 1941, 1942, 4160, 4160H1, 4170H1, 9160, 9170.
- Single Hung = Level 2 No Hazard - 4120,4130,4140, 4150,9130; Level 3a Low Hazard 9150.
- Double Hung = Level 2 No Hazard - 9350.
- Horizontal Slider = Level 1 No Break - 9540; Level 3a Low Hazard - 9530.
- Project Out/Casement = 1801, 1901, 1851, 1251, 1951, 1805, 1205, 1905.



Performance Condition	Protection Level	Hazard Level	Description of Window Glazing Response
1	Safe	None	Glazing does not break. No visible damage to glazing or frame.
2	Very High	None	Glazing cracks but is retained by the frame. Dusting or very small fragments near sill or on floor acceptable.
3a	High	Very Low	Glazing cracks. Fragments enter space and land on floor no further than 3.3 ft. from the window.
3b	High	Low	Glazing cracks. Fragments enter space and land on floor no further than 10 ft. from the window.
4	Medium	Medium	Glazing cracks. Fragments enter space and land on floor and impact a vertical witness panel at a distance of no more than 10 ft. from the window at a height no greater than 2 ft. above the floor.
5	Low	High	Glazing cracks and window system fails catastrophically. Fragments enter space impacting a vertical witness panel at a distance of no more than 10 ft. from the window at a height greater than 2 ft. above the floor.

Window Wall



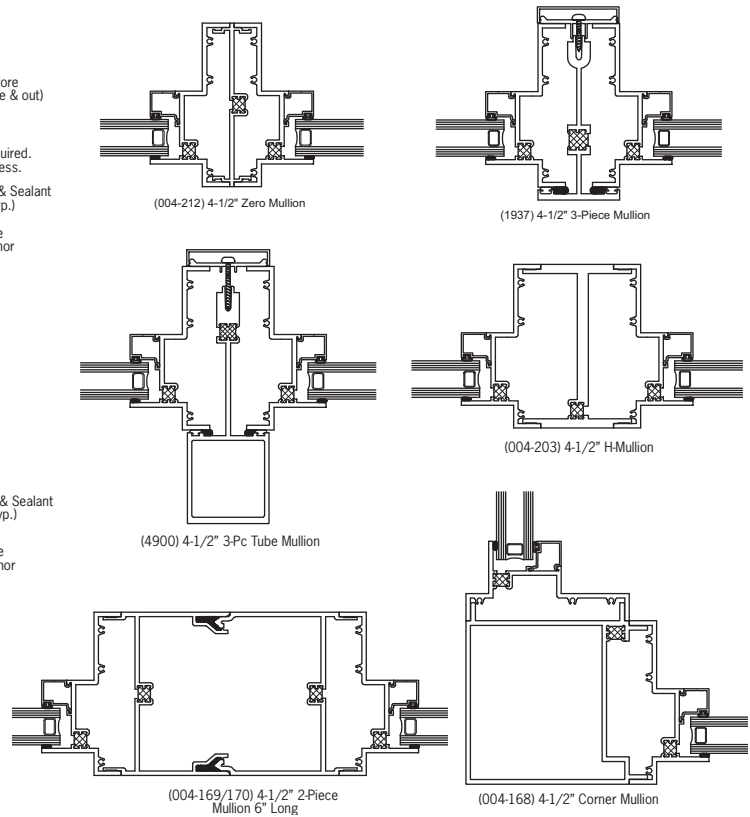
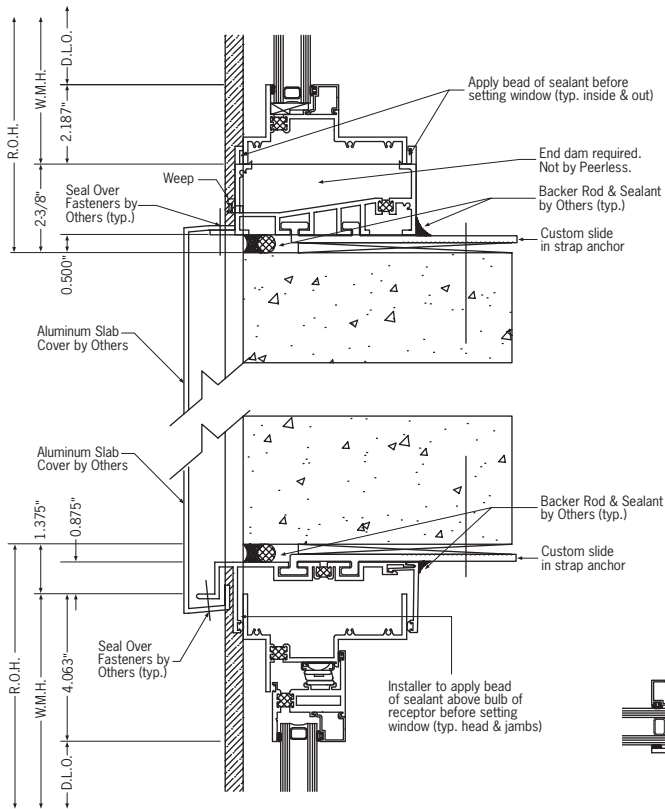
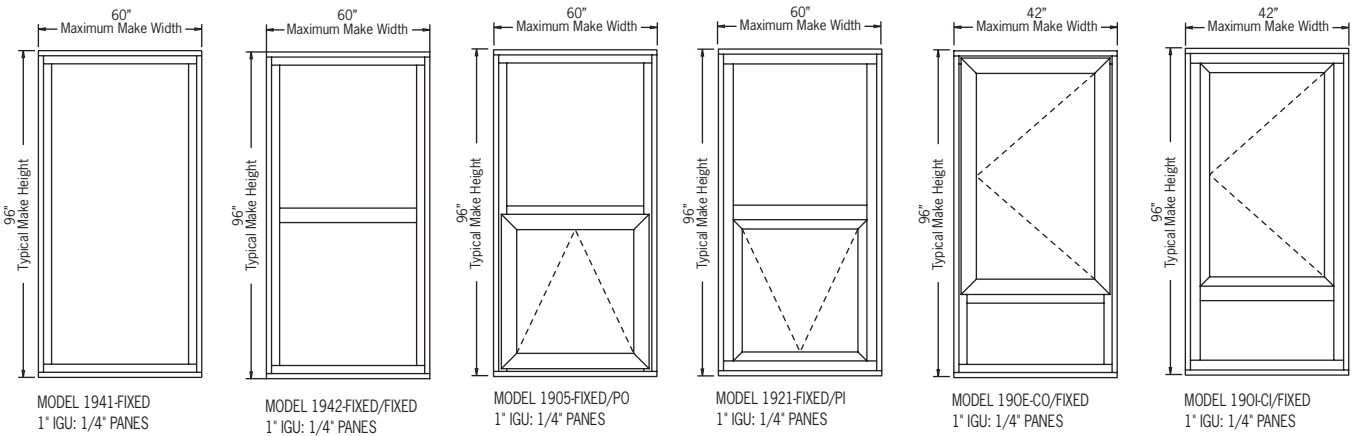
1900 Series Models – 1941, 1942, 1905, 1921, 190E, & 190I :
 4 1/2" Frame Depth – Configurations Per Elevations Only;
 Rating: AW 65-100

How used in openings: Slab to Slab Construction with windows being installed in banks. Peerless can supply necessary accessories for projects including slab covers and various installation accessories to help suit conditions required.

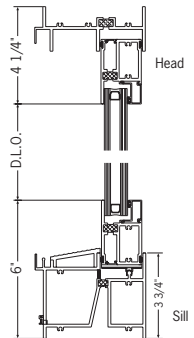
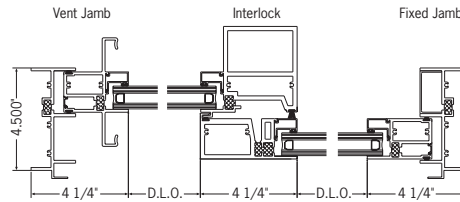
Installation Accessories: Use 1900 Series Accessories - Receptors, Sub sills, Mullions, Vinyl Caulk Stop, Trim etc.

Where used: Condominiums & High/Low Rise Apartments;

Locations: Coastal States & Large Cities throughout U.S.A. & abroad



4500 Sliding Door



Model 4500: Door

4 1/2" Frame Depth – Sliding Door – Configurations XO or OX Only

Non-Impact Rating: HC/AW 65

Impact Rating: AW 100

Hardware: Thumb-turn & Extruded Pull Rail

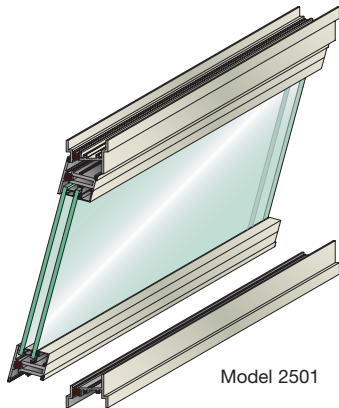
Options: Door to marry up with 1900 Series Only

Installation Accessories: Use 1900 Series Accessories – Receptors, Sub sills, Mullions, Vinyl Caulk Stop, Trim etc.

Where used: Condominiums & High/Low Rise Apartments

Locations: Coastal States & Large Cities

2500 Series-2 1/2"



Model 2501

Model 2501: Project Out

2 1/2" Frame Depth - Equal Sightline

Non-Blast Rating: AW 75/100

Blast Rating: Level 2, No Hazard

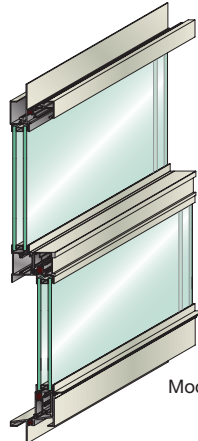
Installation Accessories: Use 2500

Series Accessories - Receptor, Sub sill, Nail Fin Adapter, Panning, Mullions, Trim, & Vinyl Caulk Stop

Where used: Office Buildings, Military, Schools & Universities

Locations: Throughout U.S.A. & abroad

4125-3 1/4"-Single Hung



Model 4125

Model 4125: Single Hung

3 1/4" Frame Depth - with Integral Fin Master Frame

Non-Blast Rating: HC 40/55

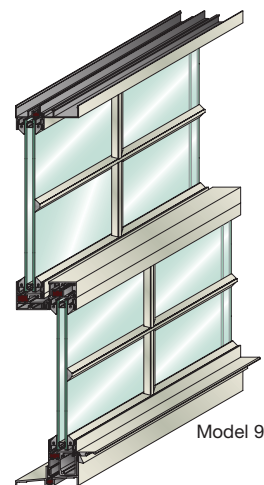
Blast Rating: Level 2, No Hazard

Installation Accessories: Use 4000 Series - 3 1/4" Accessories - Sub sills, Mullions & Trim

Where used: Military, Modular Construction, & Schools

Locations: Throughout U.S.A. & abroad

915H-4"-Single Hung



Model 915H

Model 915H: Single Hung

4" Frame Depth - Equal Sightline - Historic Rating: DP 40

Installation Accessories: Use 4000 Series - 4" Accessories - Receptors, Sub sills, Mullions, Vinyl Caulk Stop, Trim etc.

Where used: Historic Buildings & Schools

Locations: Throughout U.S.A. & abroad

In addition to the products and accessories listed in this Brochure, Peerless produces the following high quality windows, doors, screens and options: • Windows: Detention, Industrial, Security and Horizontal Sliding with removable or tilt sashes • Sliding Doors: Industrial, Hurricane and High Wind Resistant Sliding Doors • Glazing Options: Single, Double and Triple Glazing, Reflective and Low emissivity glass • Screens available with our windows and doors or separately: an extensive line including all Aluminum, Fiberglass, Stainless Steel and Framed Screens as well as Bird, Insect, and Sun Screens.

Product Selection Guide: Test Results and Custom Capabilities

Model Number	Product Operation	Frame Depth (Inches)	Typical Wall Thickness	Rating ANSJ / AAMA / MWYDA 10/11.2-26	Tested Structural Load (PSF)	Air Infiltration @ 0.21 psi	Tested Water Resistance Test Pressure (PSF)	U-Value Range	SHGC Range	STC Range (Sound)	Blast / ATP	Hurricane / Impact	Std. Insulated Glass Thickness (Inches)	Available Dual Glaze (Split Sash)	Muntin: As-Appplied	Maximum Sash Weight (Lbs)	AAMA Gateway Test Size WxH		
SINGLE HUNG	4120	Single Hung (Tilt)	3 1/4	0.062	HC 55	82.5	<0.3	8.25	.44-.61	.3-.66	27-35	Yes	No	1	No	No	A-I-T	130	60 X 96
	4120H	Single Hung (Tilt)	3 1/4	0.062	HC 40	60	<0.3	8.25	.44-.61	.3-.66	27-35	Yes	No	1	No	No	A-I-T	130	60 X 96
	4130	Single Hung (Tilt)	3 1/4	0.062	AW 45/50/70	60/75/105	<0.3	12	.45-.61	.3-.66	27-35	Yes	Yes	1	No	No	A-I-T	130	60 X 96
	9130	Single Hung (Side Load)	3 1/4	0.062	AW 40/50	60/75	<0.3	12	.48-.63	.3-.63	31-35	Yes	Yes	1	No	No	A-I-T	140	60 X 99
	4140	Single Hung (Tilt)	4	0.062	HC 55	82.5	<0.3	8.25	.44-.61	.3-.66	27-35	Yes	No	1	No	No	A-I-T	130	60 X 96
	4150	Single Hung (Tilt)	4	0.062	AW 45/70	60/75/105	<0.3	12	.44-.61	.3-.66	27-35	Yes	No	1	No	No	A-I-T	130	60 X 96
DOUBLE HUNG	9150	Single Hung (Side Load)	4	0.062	AW 75/120	112.5/150	<0.3	12	.51-.66	.3-.62	34-40	Yes	No	1	Yes	Yes	A-I-T	140	63 X 99
	4320	Double Hung (Tilt)	3 1/4	0.062	HC 50	67.5	<0.3	7.5	.47-.62	.3-.64	27-35	No	No	1	No	No	A-I-T	130	60 X 96
	4330	Double Hung (Tilt)	3 1/4	0.062	AW 50	75	<0.3	10	.48-.62	.3-.64	27-35	No	No	1	No	No	A-I-T	130	60 X 96
	4340	Double Hung (Tilt)	4	0.062	HC 50	67.5	<0.3	7.5	.47-.62	.3-.64	27-35	No	No	1	No	No	A-I-T	130	60 X 96
	4350	Double Hung (Tilt)	4	0.062	AW 50	75	<0.3	10	.48-.62	.3-.64	27-35	No	No	1	No	No	A-I-T	130	60 X 96
	9350	Double Hung (Side Load)	4	0.062	AW 75/85	105/127.5	<0.3	12	.55-.68	.3-.58	33-34	No	No	1	Yes	Yes	A-I-T	140	63 X 99
SLIDER	6000	Double Hung	4 1/2 - 6	0.062	C 50 - HC 40	60/90	<0.3	7.5	.56-.63	.41-.65	34-46	No	No	N/A	Std.	No	A-T	40	60 X 96
	3000	Double Hung (Non-Thermal)	2	0.062	C 45/60	67.5/90	<0.3	9	NT	NT	29-32	No	No	N/A	No	No	A-T	40	60 X 96
	9530	Horizontal Slider	3 1/4	0.062	AW 50	75	<0.3	10	.49-.64	.3-.62	31-35	Yes	Yes	1	No	No	A-I-T	140	96 X 78
	9540	Horizontal Slider	4	0.062	AW 70	105	<0.3	12	.52-.66	.29-.6	35-38	Yes	No	1	Yes	Yes	A-I-T	140	96 X 78
FIXED	6001	Horizontal Slider	4 1/2 - 6	0.062	C 60	90	<0.3	9	.56-.63	.41-.65	39-46	No	No	N/A	Std.	No	A-T	65	72 X 60
	3001	Horizontal Slider (Non-Thermal)	2	0.062	C 35/70	52.5/75	<0.1	9.75	NT	NT	29-30	No	No	N/A	No	No	A-T	65	72 X 60
	4160	Fixed	3 1/4	0.062	AW 60/70/80	90/105/120	<0.1	15	.37-.56	.31-.7	27-38	Yes	Yes	1	No	No	A-I-T	240	60 X 96
	4160H1	Fixed with Horizontal Muntin	3 1/4	0.062	AW 60/70	90/105	<0.1	15	.42-.59	.3-.68	27-35	Yes	Yes	1	No	No	A-I-T	240	60 X 96
PROJECT OUT	9160	Fixed	3 1/4	0.062	AW 50	75	<0.1	12	.37-.56	.31-.7	31-32	Yes	Yes	1	No	No	A-I-T	240	60 X 99
	4170	Fixed	4	0.062	AW 60/70/80	90/105/120	<0.1	15	.37-.56	.31-.7	27-38	Yes	No	1	No	No	A-I-T	240	60 X 96
	9170	Fixed	4	0.062	AW 65/105/110	112.5/157.5	<0.3	12	.37-.56	.31-.7	33-37	Yes	No	1	Yes	Yes	A-I-T	240	63 X 99
	6002	Fixed	4 1/2 - 6	0.062	AW 60	75	<0.3	10	.49-.57	.44-.7	39-49	No	No	1/2 opt	Std.	No	A-T	240	72 X 72
	3002	Fixed (Non-Thermal)	2	0.062	HC 70	105	<0.1	12	NT	NT	24-26	No	No	1/2 opt	No	No	A-T	120	60 X 60
	1801/1805	Project Out Bottom - Awning	2	0.125	AW 75/100	112.5/150	<0.1	12	.51-.65	.29-.61	35-38	Yes	Yes	1	Yes	Yes	A-I-T	120	60 X 36/99
PROJECT IN	2501/2505	Project Out Bottom - Awning	2 1/2	0.125	AW 75/100	112.5/150	<0.1	12	.51-.65	.29-.61	35-38	Yes	Yes	1	Yes	Yes	A-I-T	120	60 X 36/99
	1201/1205	Project Out Bottom - Awning	3 3/4	0.125	AW 90	135	<0.1	12	.53-.67	.29-.6	35-47	No	No	1	Yes	Yes	A-I-T	120	60 X 36/96
	1901/1905	Project Out Bottom - Awning	4 1/2	0.125	AW 75/100	112.5/150	<0.1	12	.51-.65	.29-.61	35-38	Yes	No	1	Yes	Yes	A-I-T	120	60 X 36/99
	1811/1821	Project In Top - Hopper	2	0.125	AW 75/100	112.5/150	<0.1	12	.51-.65	.29-.61	35-38	No	No	1	Yes	Yes	A-I-T	120	60 X 36/99
	2511/2521	Project In Top - Hopper	2 1/2	0.125	AW 75/100	112.5/150	<0.1	12	.51-.65	.29-.61	35-38	No	No	1	Yes	Yes	A-I-T	120	60 X 36/99
	1211/1221	Project In Top - Hopper	3 3/4	0.125	AW 90	135	<0.1	12	.53-.67	.29-.61	35-47	No	No	1	Yes	Yes	A-I-T	120	60 X 36/96
CASEMENT OUTSWING	1911/1921	Project In Top - Hopper	4 1/2	0.125	AW 75/100	112.5/150	<0.1	12	.51-.65	.29-.61	35-38	No	No	1	Yes	Yes	A-I-T	120	60 X 36/99
	1851/1855/1852	Casement - Outswing	2	0.125	AW 75/90	112.5/135	<0.1	12	.51-.65	.29-.61	35-41	Yes	Yes	1	Yes	Yes	A-I-T	120	36/72 X 60
	2551/2555/2552	Casement - Outswing	2 1/2	0.125	AW 75/90	112.5/135	<0.1	12	.51-.65	.29-.61	35-41	Yes	Yes	1	Yes	Yes	A-I-T	120	36/72 X 60
	1851-55/1853/1854	Casement/Fixed - Outswing	2	0.125	AW 75/90	112.5/135	<0.1	12	.51-.65	.29-.61	35-38	Yes	Yes	1	Yes	Yes	A-I-T	120	36/96 X 60
	2551-55/2553/2554	Casement/Fixed - Outswing	2 1/2	0.125	AW 75/90	112.5/135	<0.1	12	.51-.65	.29-.61	35-38	Yes	Yes	1	Yes	Yes	A-I-T	120	36/96 X 60
	1251/1255/1253-4	Casement/Fixed - Outswing	3 3/4	0.125	AW 90	135	<0.1	12	.53-.67	.29-.6	35-47	No	No	1	Yes	Yes	A-I-T	120	36/72 X 60
CASEMENT INSWING	1951/1955/1952	Casement - Outswing	4 1/2	0.125	AW 75/90	112.5/135	<0.1	12	.51-.65	.29-.61	35-38	Yes	No	1	Yes	Yes	A-I-T	120	36/72 X 60
	1951-55/1953/1954	Casement/Fixed - Outswing	4 1/2	0.125	AW 75/90	112.5/135	<0.1	12	.51-.65	.29-.61	35-41	Yes	No	1	Yes	Yes	A-I-T	120	36/96 X 60
	1861/1865/1862	Casement - Inswing	2	0.125	AW 75/100	112.5/150	<0.1	12	.51-.65	.29-.61	35-38	No	No	1	Yes	Yes	A-I-T	120	36/72 X 60
	2561/2565/2562	Casement - Inswing	2 1/2	0.125	AW 75/100	112.5/150	<0.1	12	.51-.65	.29-.61	35-38	No	No	1	Yes	Yes	A-I-T	120	36/72 X 60
	1861-65/1863/1864	Casement/Fixed - Inswing	2	0.125	AW 70/75/90	105/112.5/135	<0.1	12	.51-.65	.29-.61	35-38	No	No	1	Yes	Yes	A-I-T	120	36/96 X 60
	2561-65/2563/2564	Casement/Fixed - Inswing	2 1/2	0.125	AW 70/75/90	105/112.5/135	<0.1	12	.51-.65	.29-.61	35-38	No	No	1	Yes	Yes	A-I-T	120	36/96 X 60
PROJECTED FIXED	1961/1965/1962	Casement - Inswing	4 1/2	0.125	AW 75/100	112.5/150	<0.1	12	.51-.65	.29-.61	35-38	No	No	1	Yes	Yes	A-I-T	120	36/72 X 60
	1961-65/1963/1964	Casement/Fixed - Inswing	4 1/2	0.125	AW 70/75/90	105/112.5/135	<0.1	12	.51-.65	.29-.61	35-38	No	No	1	Yes	Yes	A-I-T	120	36/96 X 60
	1841	Fixed	2	0.125	AW 80	120	<0.1	15	.39-.57	.3-.69	35-38	Yes	Yes	1	Yes	Yes	A-I-T	300	60 X 99
	2541	Fixed	2 1/2	0.125	AW 80	120	<0.1	15	.39-.57	.3-.69	35-38	Yes	Yes	1	Yes	Yes	A-I-T	300	60 X 99
	1842	Fixed with Horizontal Muntin	2	0.125	AW 55	82.5	<0.1	15	.42-.6	.3-.69	35-42	Yes	Yes	1	Yes	Yes	A-I-T	300	60 X 96
	2542	Fixed with Horizontal Muntin	2 1/2	0.125	AW 55	82.5	<0.1	15	.42-.6	.3-.69	35-42	Yes	Yes	1	Yes	Yes	A-I-T	300	60 X 96
SD	1241	Fixed	3 3/4	0.125	AW 90	135	<0.1	12	.41-.59	.3-.67	35-48	No	No	1	Yes	Yes	A-I-T	300	60 X 36/96
	1941	Fixed	4 1/2	0.125	AW 80	120	<0.1	15	.39-.57	.3-.69	35-38	Yes	No	1	Yes	Yes	A-I-T	300	60 X 99
1942	Fixed with Horizontal Muntin	4 1/2	0.125	AW 55	82.5	<0.1	15	.42-.6	.3-.67	35-38	Yes	No	1	Yes	Yes	A-I-T	300	60 X 96	
4500	Sliding Door	4 1/2	0.125	AW 65/100	97.5/150	<0.3	15	.49-.63	.35-.57	31-38	Yes	Yes	1	No	No	A-I-T	300	123 X 95	



PO Box 431 Ft. Scott, KS 66701 • 2403 S. Main Street Ft. Scott, KS 66701
 toll-free: 800-279-9999 • local: 620-223-4610 • fax: 620-224-3107 • mail@peerlessproducts.com
 www.peerlessproducts.com